

# MURRAY A

04 F A C A D E

\$914,380

 4  2  2



## PARK RISE ESTATE

LOT 2 WINDSOR STREET  
WOODFORD

HOUSE AREA 200.39M2

LAND AREA 600M2

**TITLE RELEASE AUG 2026**

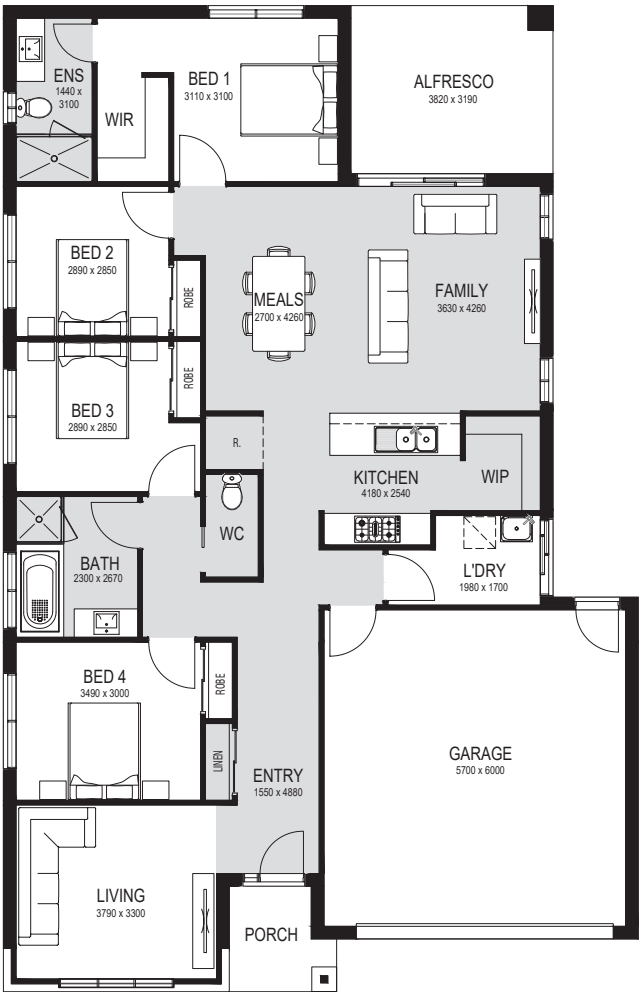
HOUSE PRICE \$439,380

LAND PRICE \$475,000

**TOTAL PRICE \$914,380**

### TURNKEY INCLUSIONS

-  Full turnkey package
-  Fixed price (including site costs)
-  900mm appliances throughout
-  Split cycle cooling system to family room and Bed 1
-  Ceiling fans to living room & all bedrooms
-  Venetians and Holland blinds to all windows
-  Quality carpet and laminated flooring throughout
-  Fully landscaped front & rear gardens, including coloured concrete driveway, path and rear outdoor living area, fences to sides and rear, clothesline & letterbox



\*Facade as shown may be altered to suit developer requirements—lighting, stone & landscaping are indicative only.

**APLACE**

QUEENSLAND  
2/3912 PACIFIC HWY,  
LOGANHOLME QLD 4129  
P (07) 2802 1650

CONTACT  
SALES@APLACE.COM.AU  
**APLACEBYGLENVILL.COM.AU**

NOTE: Minimum lot size may vary depending on the estate design guidelines and building envelopes. Floorplan areas may vary slightly in size depending on facade selection. Floorplans shown are not to scale. Floorplan may be mirrored to suit garage crossover location.  
Fixed price GST inclusive. Pricing subject to change without notice